



*Quiet Rooms*SM



RFIDprotect

Quiet Rooms | Brochure 2014



Quiet Rooms

Silence is golden, or so the saying goes.

But in a world where corporate espionage and phone hacking are commonplace a space that's shielded from electronic eavesdropping is arguably worth more than its weight in gold. Our *Quiet Rooms* are just that - secure areas within your office or home where signals from mobile phone or electronic surveillance devices cannot penetrate. Built into the actual fabric of the building (normally at the construction stage), we offer low-impact solutions for those that really value their privacy.

Outstanding performance with minimum intrusion our *Quiet Rooms* are a synthesis of functionality, cutting-edge technology and design excellence.

Technical surveillance counter-measures

Most communication devices emit some form of electro-magnetic radiation, usually as radio waves. Intelligence services understand this phenomenon and have become adept at 'sweeping' for unauthorised communication devices. However, managing surveillance counter-measures can be time consuming and costly. Sweeping for 'bugs' is not always successful – so why take the chance?

With the advent of mobile phone technologies it is arguably far easier now to listen in on private discussions than ever before. For those in the public eye, or sectors that are sensitive to corporate espionage, we advise that the most careful consideration be given to the subject of surveillance counter-measures. If you are involved in high-profile matters then you will already recognise that media coverage can be beneficial or very dangerous, and is something often outside your sphere of influence. When it comes to discussions of a delicate nature, *Quiet Rooms* offer a very real measure of control over proceedings – placing you in the driving seat again.



Do you need a *Quiet Room*?

Rooted in aerospace applications, where effective shielding mechanisms are required to ensure that sensitive electrical equipment remains protected from the harmful effects of an electro-magnetic pulse, until very recently *Quiet Rooms* have remained the preserve of state financed research and development establishments.

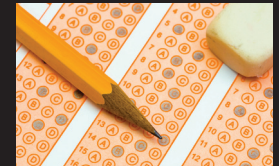
However, with widespread adoption of mobile phone communications as a means of eavesdropping on conversations, there is now a new application for this tried and tested technology.

Call us today to arrange a Technical Surveillance Counter-Measures (TSCM) survey of your facility.

Tel: +44 (0)1234 772 632 | email: info@rfidprotect.co.uk

We find that *Quiet Rooms* are ideal for:

- Business corporations (if you've ever asked your clients to remove the SIM card and battery from their mobile phones, perhaps during acquisition and merger discussions, then you may need a *Quiet Room*. Trust us - it's a lot less embarrassing!)
- People in the public eye, (especially those that are mindful of potential press intrusions);
- Negotiations (especially relevant to agents and their celebrity clients)
- Individuals that are sensitive to radio wave intrusions or Electro Magnetic Fields (EMF) and require an environment that is shielded from the effects of mobile phone masts or overhead power lines;



- Education establishments (where certain 'closed book' exam conditions require limited access to external information resources);
- Prison services (secure cells, where mobile phone signals are prevented);
- Military (secure interview rooms);
- Police (evidence rooms, where mobile phone signals cannot penetrate).



Site surveys

Our team of experienced personnel can visit you at your convenience and conduct a full Technical Surveillance Counter-Measures (TSCM) survey. This will help determine the extent of any technical security weaknesses at the surveyed facility.

Our TSCM surveys provide a robust evaluation of the facility's technical security.

This is often a useful starting point when assessing whether the facility might benefit from having *Quiet Rooms* installed.

Installation

After our team conducts a full Technical Surveillance Counter-Measures (TSCM) survey at your facility, we provide a first draft installation method statement for your consideration.

This document can be shaped with input from your architect and site manager if required.

Of paramount concern is establishing the optimum location for your *Quiet Room/s*. If we feel that a proposed installation will not be successful then you will be advised accordingly. We never recommend an installation where it could be less than 100% successful in delivering against our stated claims.



Compliance with building regulations



Our *Quiet Rooms* are constructed using a patented shielding material.

If required, we can make formal arrangements for the issuance of a Certificate of Final Inspection (CFI) through an approved building surveyor. We retain the expertise of *Anicca* - an internationally experienced and award winning engineering and design consultancy that can assist with this matter.

For further information about their expertise please visit: <http://www.anicca.com.au/>

Technical specifications

We use patented Radio Frequency (RF) shielding materials that are sourced exclusively from UK suppliers and manufactured within the European union. Our *Quiet Rooms* incorporate a barrier that delivers truly staggering RF screening capabilities; with a performance in excess of 100dB it's arguably the best RF screening worldwide in this product and price category.

Mindful that we have a duty of care to all of our customers, rest assured that our products are safe to integrate within the fabric of your facility and without causing adverse impact to the existing superstructure or ambient environment.

Shielding material specifications are as follows:

Thickness: 0,5mm

Weight: approx. 80g/m²

Material: copper/polyester mix

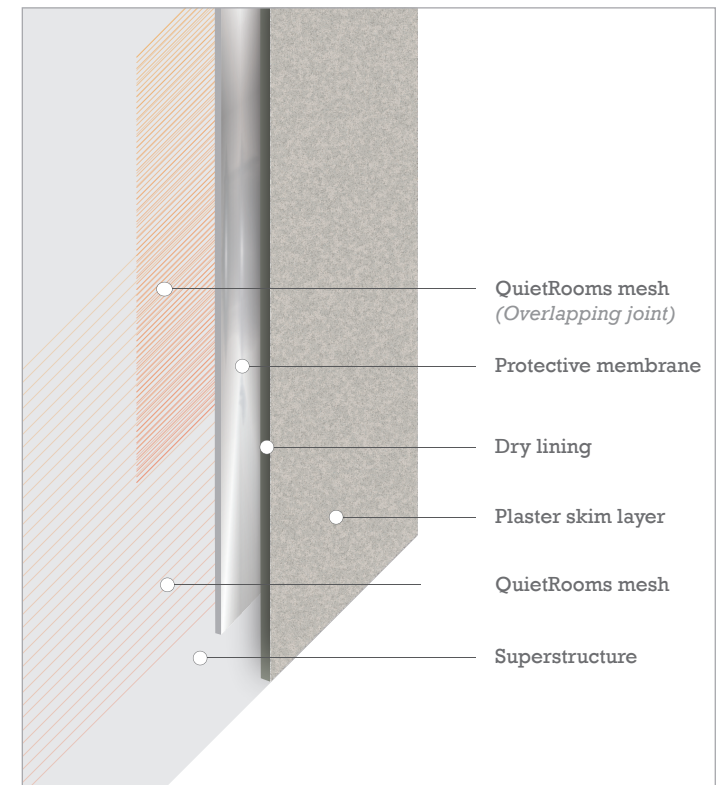
The (RF) shielding materials we install are:

- Breathable
- Resistant to decay - even in moist environments
- Frost resistant
- Malleable
- Can be laid in-wall or in concrete
- Can be coated over and decorated as normal
- Antistatic
- Very low weight

Shielding characteristic static fields: 99.999,999% to 99.999,999,99% - n.b. requires 'grounding'

Shielding characteristic low-frequency, electric fields: 99.999,999% to 99.999,999,99% - n.b. requires 'grounding'

Shielding characteristic high-frequency fields: up to 10GHz: 80dB (99.999,999%) 100dB (99.999,999,99%) - Without grounding!



Above image: *Quiet Rooms* installation overview.

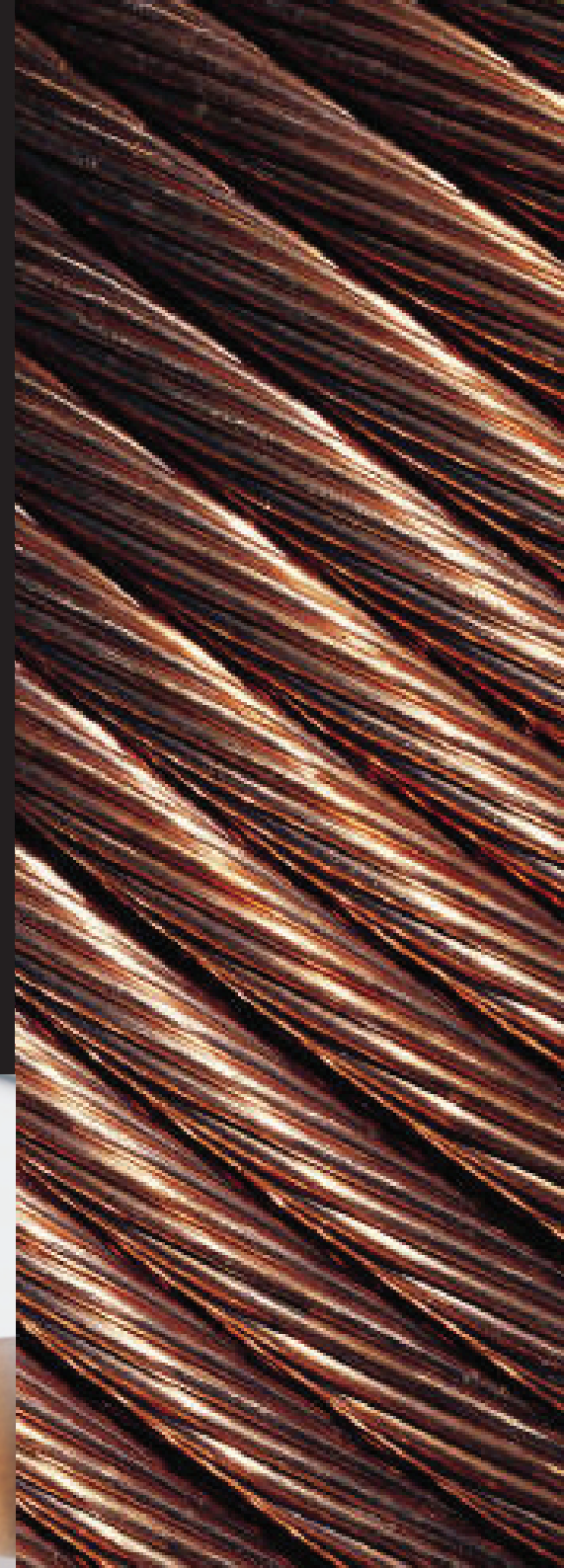
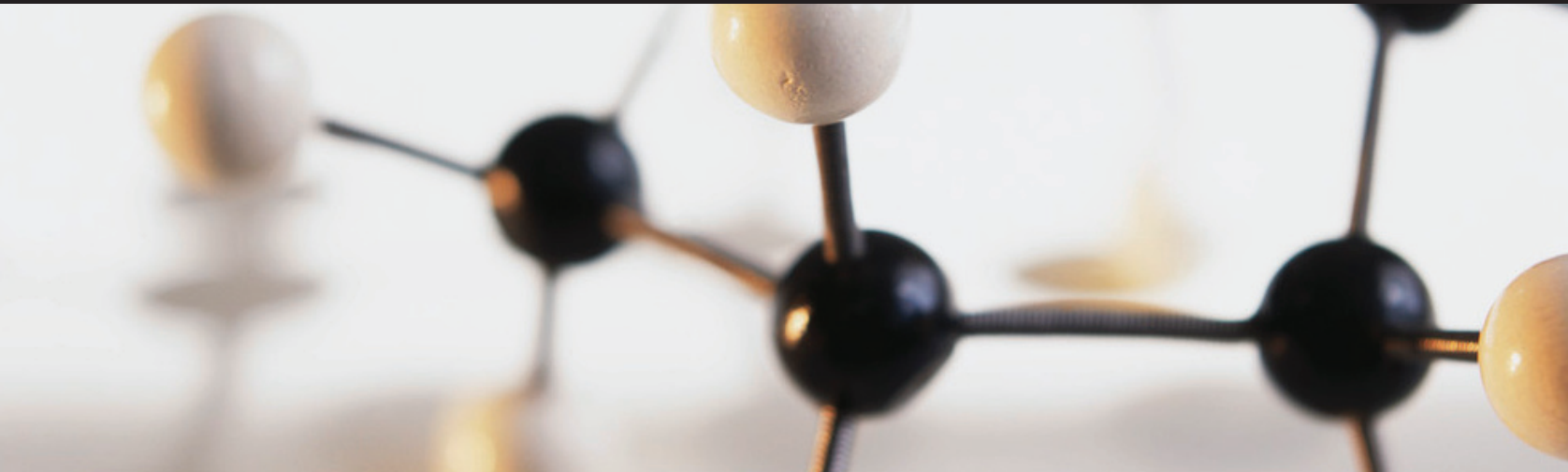
Technical specifications continued...

Reduction (sometimes referred to as 'attenuation') of high-frequency radiation is 80dB (99.999.999.99%), which is the frequency range that is subject to pulsed signals from mobile phone stations. *Quiet Rooms* not only shield RF signals, but also act as an effective barrier against static and low-frequency fields that can be radiated by cables and machines in your home, or from nearby high-voltage power lines.

A complex copper and polyester weave is at the heart of each *Quiet Room* installation. This patented material can be folded without damage, and is incredibly robust. Frost resistant, decay resistant (even in moist environments), and breathable too - it can be installed within concrete or as part of the dry-lining, i.e. before surfaces are plastered in readiness for internal 'fit-out' and decorating.

To achieve effective protection against high-frequency radiation, our *Quiet Rooms* are completely lined with this shielding material. Ensuring that there is an allowance made for overlap guarantees a hermetically sealed enclosure or so-called Faraday cage. Window areas can pose particular challenges, although we have a solution that is no more intrusive than having a fly-screen installed.

Whilst it is not necessary to ground our shielding material for RF screening, this is something we generally recommend to our clients and a grounding kit can be provided for a modest additional charge. In doing so, the installation will also protect against low-frequency electric fields such as those emitted from high-voltage lines or power cables.



Typical installation costs



Our TSCM surveys provide a useful starting point when assessing whether your home or facility might benefit from having *Quiet Rooms* installed.

According to the complexity of each installation and scope of works, (and whether we are engaged at the construction, or post-completion stages) our *Quiet Rooms* can be delivered:

from £180.00 GBP (+VAT) per square metre* (if engaged at pre-construction stages)

from £630.00 GBP (+VAT) per square metre* (if engaged at post-completion stages)

Payment schedules

We operate to a phased payment schedule, normally comprising three distinct tranches. The first payment at 30% of total project cost is due once contractual arrangements are finalised. A second payment of 40% falls due once an installation method statement is agreed upon and at a point where work on site can commence.

We would anticipate a final balance payment to be issued at the point at which works (as specified under written contract) have been completed in accordance with the plans and specifications, or after you have received a certificate of final inspection.

All quotations are in sterling, and will attract VAT at the current rate.

Some guidance when determining costs

Whilst the above figures include labour and all associated installation costs, they do not make provision for any ancillary items (such as doors, windows, ornamental mouldings and surrounds) or custom shielding treatments that may be required in order to ensure the overall integrity of an installation.

Ultimately, the associated costs are determined by the level of shielding that is required and by any agreed variations made to the building plans and specifications within the installation, after a contract of engagement has been signed.

How does one place a value on information and keeping it safe? Once the genie has been released from its bottle, then returning it is an impossible task. The construction of a typical *Quiet Room* is circa £22,000 although values can reach beyond £260,000 depending upon the extent of ambition and surface decoration required.

Even then many would argue that this is a small price to pay for peace of mind.

**Note: When measuring spaces for a potential Quiet Rooms installation it is important to count all surface areas; including walls, ceilings, floors and door/s.*



Where to locate *Quiet Rooms*?

Within most domestic and non-domestic buildings a space can be found to install *Quiet Rooms*. We find that engaging our services at the early design stages results in optimum outcomes. Here we are able to assess the fabric of a building and with input from your architect and construction team will suggest a range of locations where the *Quiet Room* might be situated.

Quiet Room features can be accommodated within most building scenarios, although we find that an internal room (flanked on all six sides by other rooms and with limited window access) makes for an ideal location.

From conference room to home office...

We can adapt most spaces into a *Quiet Room* - home offices and conference rooms are typical installations. Should you require secure access, attacker-resistant doors or a covert entry point then guidance can be given accordingly. (If required, we can also offer guidance on ambient lighting and wider security provision.)

Quality assurance

You can be assured of a premium quality service and one where outputs are delivered against agreed project milestones.

We offer a comprehensive installation package. Our representatives can work closely with your architect or construction team ensuring optimum design solutions are attained before construction or renovations are initiated.

About us...

#1 We don't do anything else.

It's true! As the only dedicated supplier in the United Kingdom for 'anti-skimming' RFID shielding products, you can be sure of a first rate service – because we don't do anything else. We won't try to sell you a panic room or bullet proof door for the sake of it – just a simple, effective RF shielding environment that when used correctly will help protect you from eavesdropping. It's that simple!

#2 We manufacture too.

With a European manufacturing base there's no limit to the range of bespoke shielding products that we can have made for you. Whether you're a large corporation, industrial designer, or an individual working out of a garden shed – don't worry, because we can find solutions to meet your particular needs.

#3 Traditional customer care in a technological age.

Yes, it exists even in this technological age! We pride ourselves on providing traditional customer care, and are not satisfied with our service until you are. We don't have an automated phone system with premium tariffs and dozens of menu options – if we're not in the office, then we don't answer calls or emails! (But you might want to drop us a line or leave a message, because we will always get back to you as soon as is possible.) Of course, if you're someone who likes to poke, tweet or just wants to hear our latest news then we'd love you to follow us on Facebook and Twitter.

#4 We care about crime reduction.

With over fourteen years experience in law enforcement and security, we've seen some pretty ingenious crimes in our time. We've also witnessed at first hand the distress caused to victims and remain committed to helping improve things. When we saw the opportunity to combine practical and timely crime reduction information, with a terrific product we just had to do our bit.

We're aiming to make your world even more secure. We hope we'll be doing it for a long time to come.



Our commitment to maintaining your privacy

We adhere to a strict code of conduct and will respect our clients' wishes for discretion at all times. We understand the particular importance of ensuring that the nature of relationships with certain customers is not disclosed to third parties. To this end we will always suggest entering into an appropriate non-disclosure agreement prior to every engagement.

We take this matter very seriously.

You will not see our work reported in the press or broadcast media, nor on home improvement television shows. We hope that potential customers will understand why we are unable to include photographs of previous installations due to the nature of certain confidentiality agreements already in place.

Our clients

Whilst we hope you will understand why we cannot disclose details of our client base for security reasons, we are pleased to count one of Europe's largest defence contractors and members of the British Peerage amongst our many satisfied customers.

We are RFID Protect – a British company, dedicated to providing and developing secure environments for individuals that value privacy.

Some frequently asked questions...



What is a *Quiet Room*?

Quiet Rooms are secure areas within your office or home where signals from mobile phone or electronic surveillance devices cannot penetrate.

Who needs a *Quiet Room*?

With the advent of mobile phone technologies it is arguably far easier now to listen in on private discussions than ever before. For those in the public eye, or sectors that are sensitive to corporate espionage, *Quiet Rooms* provide an effective surveillance counter-measure.

What is the difference between *Quiet Room*, safe and panic rooms?

Quiet Rooms are secure areas within your office or home where signals from mobile phone or electronic surveillance devices cannot penetrate. Safe rooms and panic rooms have no such technology – instead their primary function is to keep valuable items and any occupants safe from intruders.

Can I convert part of my home or office into a *Quiet Room*?

Certainly, all our installations are low-impact and once installed there is little in the way of physical evidence to suggest that a room has a dual function, i.e. as *Quiet Room*.

Do you install each *Quiet Room* or can I use the shielding material in a DIY scenario?

Our preferred approach is always to undertake full responsibility for each installation, managing the process from concept development stages through to project completion. However, we are always willing to discuss other approaches and can be flexible.

Do you tell anyone that I have a *Quiet Room* in my property?

Certainly not. We adhere to a strict code of conduct and will respect our clients' wishes for discretion at all times. We understand the particular importance of ensuring that the nature of relationships with certain customers is not disclosed to third parties. This is a matter of extreme importance to us.

How much does a *Quiet Room* cost?

Costs for *Quiet Rooms* will inevitably vary according to your specific requirements.

Will you travel outside of the United Kingdom to undertake a survey for me?

Certainly, although you will be required to assist with the costs of our flights and accommodation (depending upon the location of your facility and distances involved).



Call us today to arrange a Technical Surveillance Counter-Measures (TSCM) survey of your facility.

Tel: +44 (0)1234 772 632 | info@rfidprotect.co.uk



Alchemy Creative Solutions Ltd

Suite 314, St. Loyes House | St. Loyes Street | Bedford | MK40 1ZL

Tel: +44 (0)1234 772 632

www.rfidprotect.co.uk

RFID Protect is a division of Alchemy Creative Solutions Limited.
QuietRooms is wholly owned by Alchemy Creative Solutions Limited.

Alchemy Creative Solutions Ltd is registered in England & Wales. Company No.5259241